



Remote Location Surveillance or Remote Process Monitoring

From now on you are able to view any of your processvalues or -variables remotely, at anytime, from anywhere, as long as you have a computer with an internet connection. ProcessMonitor offers you easy access to a secured and user-friendly web page, to watch over your processvalues and their historical charts and trends.

With this information available, you can easily use it to optimize your (production) process and efficiency or remote monitoring and guarding purposes for (field)services planning and inventory management due to forecast replenishment.

In order to take care of the processvalue or -variable at remote site, a reliable process- or field instrument should be installed. ProcessMonitor can manage for example: pressure, level, temperature, flow, analytical and vibration sensors or measurements. Also a combination of these at one location is possible. Briefly: as long as your instrument, sensor or other equipment has an analog output, you can take advantage of ProcessMonitor features. You only have to link these (analog) output to the "plug & play" DAC-module, the **Data Acquisition & Communication Module**.

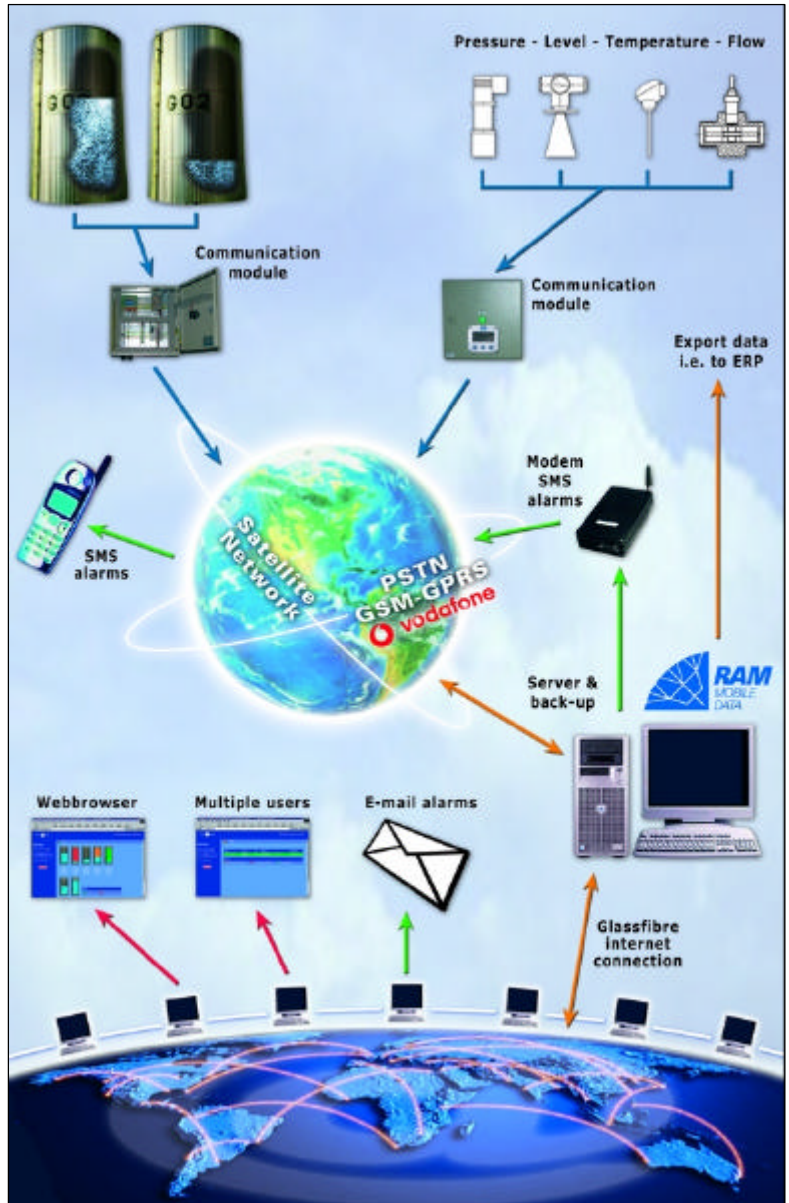
The system collects measurement values up to 96 times a day from remote sites. Usually there is locally no landline (PSTN) connection available and because installing one can be costly, wireless communication is preferred. This is done through the GSM/GPRS network or a satellite terminal.

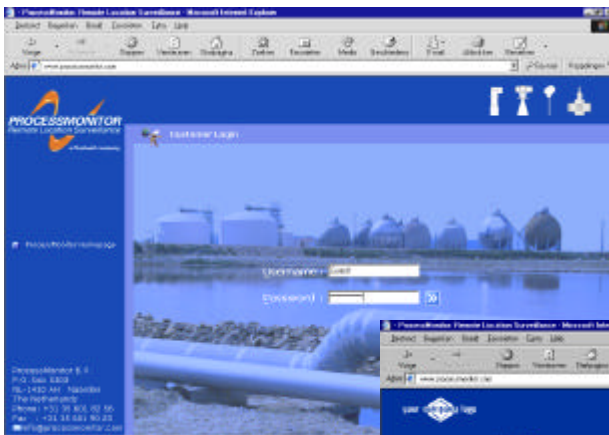
The complete software application is being monitored and guarded 24 hours a day, 7 days a week, by a specialized hosting provider RAM Mobile Data. They also take care for all necessarily infrastructure and hardware, like a redundant internet connection with the fibreglass cable of MCI in The Netherlands, in order to guarantee maximum availability of the ProcessMonitor software application.

Through the ProcessMonitor internet website you can access all available data regarding the remote locations. Because users of the ProcessMonitor system only need a standard web-browser on their computer, there is no network or software to set up or configure.

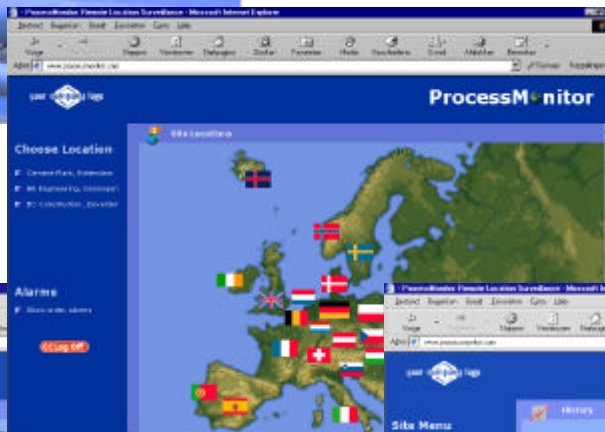
The ProcessMonitor website lets you view the actual status or data, chart trends and alarms just as the date and time of the last data update. Standard trending graphs with 3 months history provides the information for the people who can use it for process- or system improvements. All data and graphs can be downloaded in several formats for analysis and reporting.

Based on the collected measurement data, the ProcessMonitor system automatically can generate alarms, sent to your designated personnel by e-mail, SMS and/or pager.

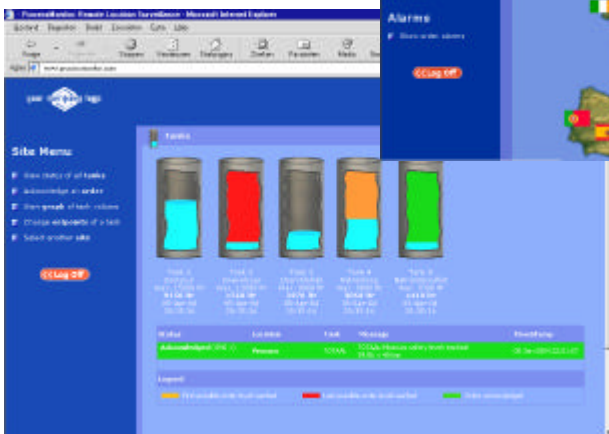




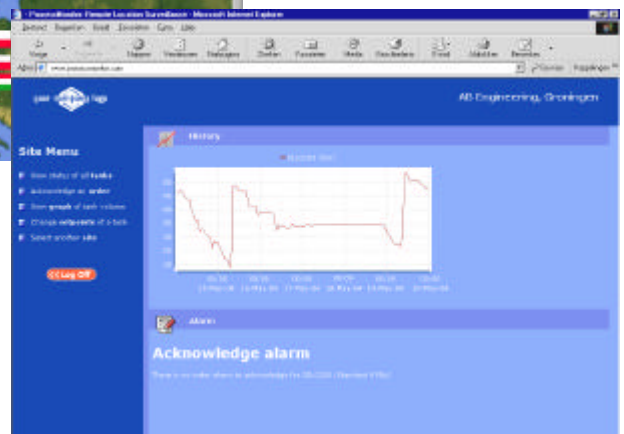
Log on to the web site to see your data can only be achieved by an User name and Password for those individuals who you have given access. This User name and Password also determines the access-rights i.e. to view single or several locations and/or the capability to change (alarm)set points.



All remote sites are presented to you geographically. You will have an overview of the condition of all remote locations at a glance.



Graphical representation of the tank volume, tank- and product name, content in volume units, site location and date and time.



The screens give you concise displays of level, status and inventory trends in multiple storage tanks. ProcessMonitor provides the tools to predict when refilling will be needed.

Features:

- Subscription, no investment in hardware or software;
- Subscription including communication costs, so no surprises afterwards;
- Multiple (field)instruments, sensors per remote site/location;
- Monitor and manage process variables using the internet;
- Automatic data retrievals from remote site;
- User dependent access-rights;
- Overview page with recent alarms and events;
- Alarm acknowledgement on the website or with a SMS-message;
- Historical overview in free to choose periods;
- Historical overview with trend graphs and table charts;
- Export data to spreadsheet, i.e. MS-Excel;
- Export or transfer the data in CSV- or XML-format;
- Export trend graphs to BMP, JPG or GIF-format (only MS-Windows browsers);
- The complete solution for web-based data acquisition or remote location surveillance.

