

# ProcessMonitor

**Web based wireless data collection and monitoring, data transfer and visualization with follow-up messages and data integration into business management software.**

## Means:

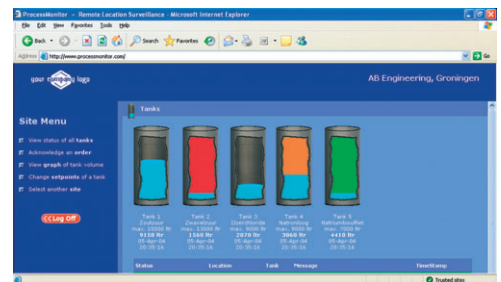
- Hardware designed for industrial applications using (field) instrumentation to measure level, flow, temperature, pressure, vibration, consumption and analytical values.
- Collecting process data measured at (inter)national sites using SMS messages, GSM / GPRS or satellite communication.
- Continuous remote process monitoring and data collection, 24 hours a day, 7 days a week.
- Internet-based ProcessMonitor server.

## Applications:

- Vendor managed inventory (VMI); information collection of actual stock levels from (inter)national customers.
- Actual flow measurement information in oil / gas / water distribution networks.
- Real time remote monitoring of process conditions.
- Remote tank level monitoring and alarming.
- Measurement and data transmission of weather stations.
- Remote monitoring of small scale (mobile) production facilities.
- Maintenance: service level optimization for mechanic installations (e.g. pump stations) and processes.

## Advantages:

- Cost saving: reduction of express deliveries and optimized logistics.
- No manual check-ups: save workers time and reduce mistakes.
- Trend information and actual information available on the spot.
- World wide access to measured process data.
- Integration of remote process data into ERP systems.



Specifications are subject to change without notice.

Copyright: Fluidwell bv - 2006 - LFL-PM-GEN2/EN/05-06